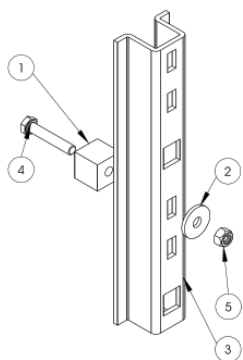
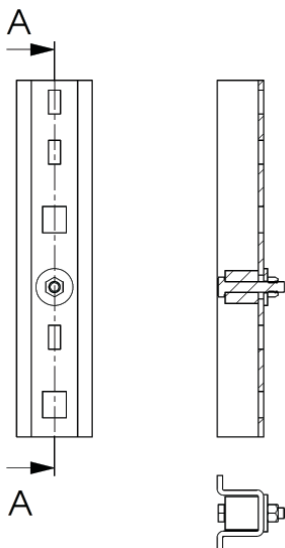
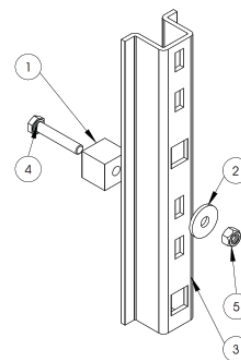
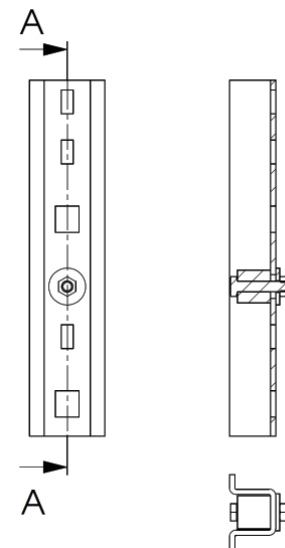


Montageanleitung
Schienensperre starr - 077574



POS-NR.	SACHNUMMER	BENENNUNG	ABMASSE	MENGE
1	00165.012.51.3	Anschlag	25x25x25	1
2	00145.509.00.3	Scheiben ISO 7094 - 8	Ø9/Ø28x3	1
3		Steigschutzschiene	57x35x270	1
4	00100.332.00.3	Sechskantschraube DIN 931 M 8 x 45 - 8,8	M 8 x 45	1
5	00140.208.00.3	Sechskantmutter DIN 985 M 8	M 8	1

Montageanleitung
Schienensperre starr - 077574



POS-NR.	SACHNUMMER	BENENNUNG	ABMASSE	MENGE
1	00165.012.51.3	Anschlag	25x25x25	1
2	00145.509.00.3	Scheiben ISO 7094 - 8	Ø9/Ø28x3	1
3		Steigschutzschiene	57x35x270	1
4	00100.332.00.3	Sechskantschraube DIN 931 M 8 x 45 - 8,8	M 8 x 45	1
5	00140.208.00.3	Sechskantmutter DIN 985 M 8	M 8	1